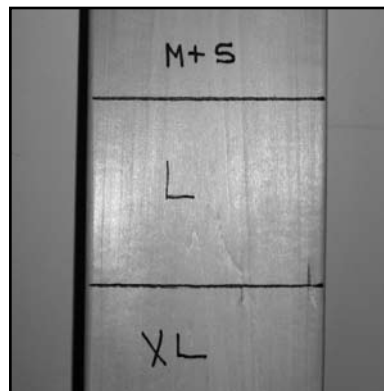


## Fur Harvesters Auction Inc Pelt Sizing

Raccoon		
Size	Lenght	Lenght
4X	Over 35"	Over 89 cm
3X	32" - 35"	81 - 89 cm
2X	29" - 32"	74 - 81 cm
XL	27" - 29"	69 - 74 cm
LG	24" - 27"	61 - 69 cm
LM	22" - 24"	56 - 61 cm
MS	Under 22"	Under 56 cm

### Mark the pelt lengths on your boards

In order to achieve the best results we recommend that you mark the pelt sizes on each board.



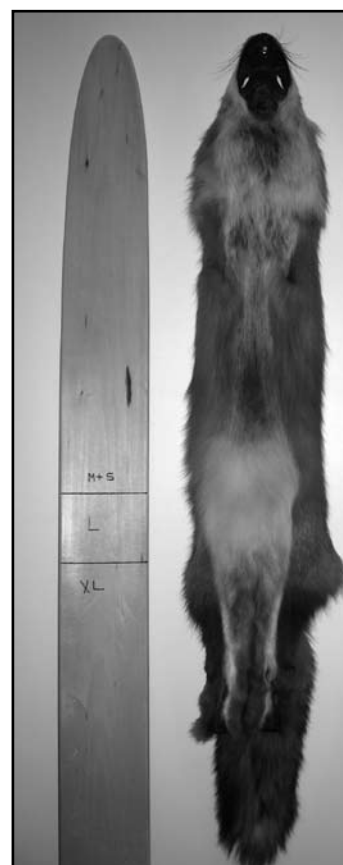
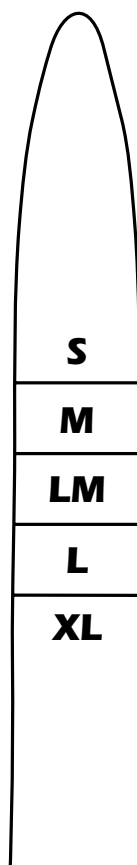
Beaver		
Size	Lenght	Lenght
3X	Over 70"	Over 178 cm
2X	65" - 70"	165 - 178 cm
1X	60" - 65"	152.5 - 165 cm
LG	55" - 60"	140 - 152.5 cm
LM	51" - 55"	129.5 - 140 cm
MD	47" - 51"	119 - 129.5 cm
SM	42" - 47"	107 - 119 cm
XS	Under 42"	Under 107 cm

This will allow you to properly stretch each pelt at the best possible size. Do not over stretch the pelt, rather stretch to achieve the proper length. Remember that pelts shrink slightly in length when they dry. Pinning something directly on the line will result in losing a size. Ensure you pin over the line, enough so that it retains its size. You can not make a medium pelt into a large pelt, or make a large pelt into an extra-large pelt, without over stretching. This tip is about pinning borderline skins.

Wild Mink (male)		
Size	Lenght	Lenght
2X	Over 23"	Over 58.5 cm
1X	21" - 23"	53 - 58.5 cm
LG	19" - 21"	48 - 53 cm
LM	17" - 19"	43 - 48 cm
MS	Under 17"	Under 43 cm

Wild Mink (female)		
Size	Lenght	Lenght
1X	Over 19"	Over 48 cm
LG	17" - 19"	43 - 48 cm
MS	Under 17"	Under 43 cm

Otter		
Size	Lenght	Lenght
1X	Over 38"	Over 96.5 cm
LG	34" - 38"	86 - 96.5 cm
LM	32" - 34"	81 - 86 cm
MS	30" - 32"	76 - 81 cm
XS	Under 30"	Under 76 cm



Marten / Sable		
Size	Lenght	Lenght
2X	Over 23"	Over 58.5 cm
1X	21" - 23"	53 - 58.5 cm
LG	18" - 21"	46 - 53 cm
MD	16" - 18"	41 - 46 cm
SM	Under 16"	Under 41 cm

Fisher		
Size	Lenght	Lenght
1X-LG	Over 28"	Over 71 cm
LM	25" - 28"	63.5 - 71 cm
MS	Under 25"	Under 63.5 cm

Red Fox		
Size	Lenght	Lenght
2X	Over 34"	Over 86 cm
1X	32" - 34"	81 - 86 cm
LG	28" - 32"	71 - 81 cm
MS	Under 28"	Under 71 cm

Grey Fox		
Size	Lenght	Lenght
1X-LG	Over 28"	Over 86 cm
MS	Under 28"	81 - 86 cm

Lynx		
Size	Lenght	Lenght
1X	Over 39"	Over 96.5 cm
LG	35" - 39"	89 - 96.5 cm
MD	31" - 35"	79 - 89 cm
MS	Under 31"	Under 79 cm

Bobcat / Lynx Cat		
Size	Lenght	Lenght
2X	Over 40"	Over 101.5 cm
1X	36" - 40"	91.5 - 101.5 cm
LG	32" - 36"	81 - 91.5 cm
MS	Under 32"	Under 81 cm

Coyote		
Size	Lenght	Lenght
3X	Over 46"	Over 117 cm
2X	42" - 46"	107 - 117 cm
1X-LG	36" - 42"	91.5 - 107 cm
MS	Under 36"	Under 91.5 cm

Squirrel		
Size	Lenght	Lenght
1X-LG	Over 9.25"	Over 23.5 cm
MS	Under 9.25"	Under 23.5 cm

Ermine		
Size	Lenght	Lenght
2X	Over 15"	Over 38 cm
1X	13" - 15"	33 - 38 cm
LG	11" - 13"	28 - 33 cm
MD	9" - 11"	23 - 28 cm
SM	Under 9"	Under 23 cm

Ring Seal		
Size	Lenght	Lenght
2X	Over 90"	Over 229 cm
1X	80" - 90"	203 - 229 cm
LG	66" - 80"	165 - 203 cm
LM	60" - 65"	152 - 165 cm
MS	Under 60"	Under 152 cm

Skunk		
Size	Lenght	Lenght
3X-2X	Over 22"	Over 56 cm
1X-LGE	18" - 22"	46 - 56 cm
MS	Under 18"	Under 46 cm

Muskrat		
Size	Lenght	Lenght
3X	Over 17"	Over 43 cm
2X	15 1/2" - 17"	39 - 43 cm
1X	14" - 15 1/2"	35.5 - 39 cm
LG	13" - 14"	33 - 33.5 cm
MD	11 1/2" - 13"	29 - 33 cm
SM	10" - 11 1/2"	25 - 29 cm
XS	Under 10"	Under 25 cm

Badger/Opossum		
Size	Lenght	Lenght
2X	Over 28"	Over 71 cm
1X	25" - 28"	63.5 - 71 cm
LG	22" - 25"	56 - 63.5 cm
MS	Under 22"	Under 56 cm